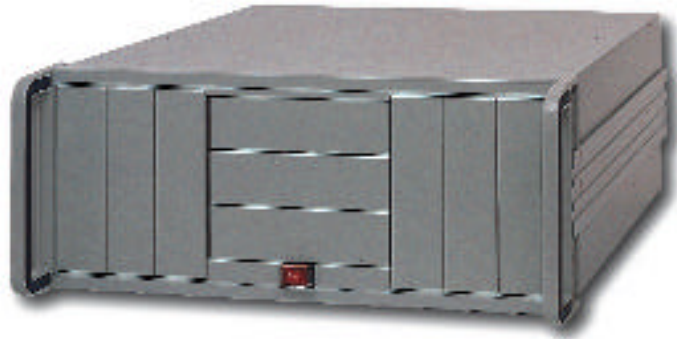


RDA-209

19" 4U 9-drive Rack-mount Disk Array Chassis



- ◆ The most compact size to fit 9 disk drives in a 19" rack-mount chassis
- ◆ Three horizontal drive bays for some special devices, such as RAID controller and CD-ROM
- ◆ 450W redundant and standard PS/2 power supply optional
- ◆ Two cooling fans for better ventilation
- ◆ Only 4U in height, suitable for communication node or rack server
- ◆ Easy for system installation and maintenance



▲ RDA-209 with redundant PSU



▲ Power supply bracket



▲ RDA-209 with PS/2 PSU

Specifications

General

Construction	Heavy-duty steel
Cooling	Two 12cm internal cooling fans
Disk Drive Housing	Nine 5.25" drive bays
Standard Color	Light gray, black
Dimension	482(W) x 450(D) x 177(H) mm 19"(W) x 17.7"(D) x 7"(H)
Weight	Net: 15kg (33.3lb) Gross: 16kg (35.6lb)

Power Supply

Maximum Output	450W
Output Voltage & Current	+5V@30A, +12V@14A, -5V@0.5A, -12V@0.5A +12V (max. 220W)
Input Voltage	90 - 132V/180 - 264V
Input Frequency	47Hz - 63Hz
Input Current	10A@115V, 5A@230V
Efficiency	Min. 80%
MTBF Reliability	Min. 50,000 hours at 25°C (70°F)
Safety	UL/CUL/TUV/CE

Environment

Operating Temperature	0 to +55°C
Storage Temperature	0 to +70°C
Relative Humidity	5 to 95% non-condensing

Ordering Guide

RDA-209

19" rack-mount disk array chassis w/o power supply

RDA-209-3002

19" rack-mount disk array chassis with 300W redundant power supply

RDA-209-38A

19" rack-mount disk array chassis with 380W PS/2 power supply