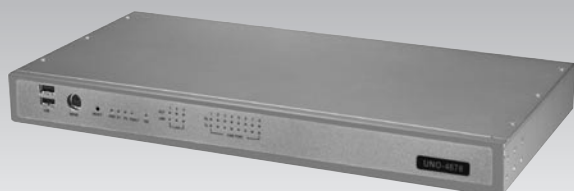


UNO-4678

Intel® Celeron® M UNO with 3 x LAN,
8 x COM, PC/104

NEW



Features

- Onboard Celeron® M 1 GHz processor and supports 512 MB Memory
- Supports Lm sensor which can retrieve CPU and board temperature for monitoring purposes
- 8 x isolated RS-232/422/485 ports with automatic flow control
- 3 x 10/100Base-T RJ-45 ports
- Supports two USB and 1 x type I/II CF card
- Windows® CE 5.0 and Windows XP Embedded ready solution
- Windows 2000/XP driver ready and Linux driver support
- Windows XP Embedded (SP2) ready platform with write protection (EWF)
- Onboard system & I/O LED indicators
- Fanless and no internal cabling design

Introduction

UNO-4678 is high-performance controllers support to Celeron M 1 GHz grade, and equipped with eight isolated serial communication ports. They inherit the glory from the UNO family and includes the typical characteristics as it is fanless, robust, and reliable. Furthermore, in order to meet the diverse applications in industrial automation and control, varied interfaces and 1U form factor are suitable for use, especially for rack mounting. Also, LEDs for all ports and modes on the front panel simplify the monitoring status for operation, administration and maintenance. UNO-4678 is convenient and user-friendly platforms to fulfill a wide range of requirements.

Specifications

General

- **Certifications** CE, FCC class A, UL, CCC
- **Dimensions (W x D x H)** 1U (440 x 220 x 44 mm/17.3" x 8.6" x 1.7")
- **Enclosure** SECC
- **Mounting** Rack, wall
- **Power Consumption** 24 W (Typical)
- **Power Input** Min. 48 W (9 ~ 36 V_{DC}) (e.g +24 V @ 2 A), AT
- **Weight** 3.6 kg
- **OS Support** Windows XP Embedded, Windows 2000/XP, Windows CE 5.0, Linux

System Hardware

- **CPU** Celeron M 1 GHz
- **Memory** 512 MB DDR SDRAM
- **Indicators** Power, Power input 1, Power input 2, Power fault, IDE, and all ports Tx/Rx monitoring
- **Keyboard/Mouse** 1 x PS/2
- **Storage**
 - SSD 1 x internal type I/II CompactFlash® slot
 - HDD built in extension kit for one standard 2.5" HDD
- **VGA** DB15 VGA connector, supports up to 1600 x 1200 @ 85 Hz

Communications

- **Serial Ports** Eight RS-232/422/485 ports include:
 - 2 x DB-9 connectors with 9-wired RS-232
 - 6 x screw terminals with 5-wired RS-232Automatic RS-485 data flow control
2000 V_{DC} surge protection & 2000 V_{DC} isolation
- **Serial Port Speed** RS-232: 50 ~ 230.4 kbps
RS-422/485: 50 ~ 921.6 kbps (Max.)
- **LAN** 3 x 10/100Base-T RJ-45 ports
- **USB Ports** 2 x USB, USB EHCI, Rev. 2.0 compliant

Environment

- **Humidity** 95% @ 40° C (non-condensing)
- **Operating Temperature** -10 ~ 50° C (14 ~ 122° F)
- **Shock Protection** IEC 68 2-27
CompactFlash®: 50 G @ wall mount, half sine, 11 ms
HDD: 20 G @ wall mount, half sine, 11 ms
- **Vibration Protection** IEC 68 2-64 (Random 1 Oct./min, 1hr/axis.)
CompactFlash®: 2 Grms @ 5 ~ 500 Hz,
HDD: 0.5 Grms @ 5 ~ 500 Hz

Ordering Information

- **UNO-4678-C11E** Celeron M 1 GHz, 512 MB RAM UNO-4678