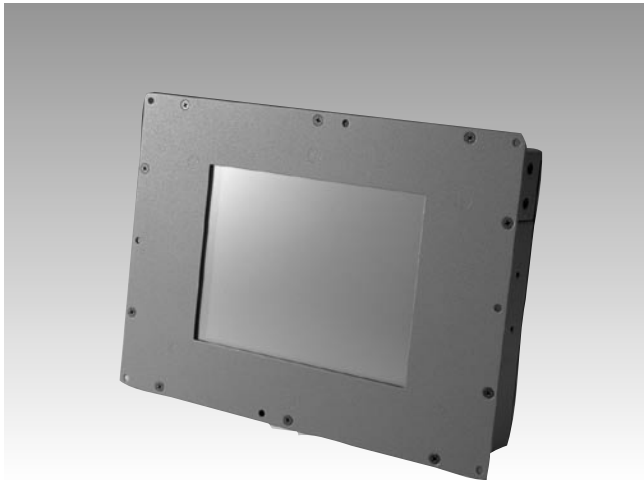


SPC-58C

5.6" Facility Control Panel



Features

- Intel XScale® PXA270 CPU and Microsoft Windows® CE 5.0
- 5.6" color TFT LCD panel and resistive touchscreen
- Ultra low power consumption and fanless
- Compact size with COM, USB, LAN, CF, and audio interfaces
- IP65 front bezel
- Open-frame model: ideal design for inside-out mounting
- Adobe® Flash Player & Java Virtual Machine (JVM) as options

Introduction

The SPC-58C integrates the Intel XScale PXA270 CPU and Windows CE 5.0. It is designed to provide customers with a low power, high performance embedded touch control platform with good networking and graphical performance. The SPC-58C has a bright 320 x 234 LCD screen and is supplied without front bezel for inside-out mounting, making it ideal for customers to design their own chassis or housing. The SPC series supports the Adobe Flash Player and Java Virtual Machine (JVM) by project base. Colorful GUIs are easy to develop using Adobe Flash and Java.

Specifications

System Kernel

- **CPU** Intel PXA270 312 MHz (520 MHz as option)
- **OS** WinCE 5.0 core Eng. version
- **SDRAM** 64 MB
- **Flash** 128 MB (256 MB as option)
- **WDT** PXA270 internal
- **Boot Loader** 1 MB AMD Flash ROM for boot loader
- **RTC** HT1381 backup by 65 mAh rechargeable coin battery

Display

- **LCD** 5.6" 18-bits color 320 x 234 TFT
- **Brightness** 500 nits (S/W adjustable)
- **Touchscreen** 4-wire resistive
- **Graphics Chip** PXA270 Internal

I/O

- **COM** COM1: RS-232 by DB-9 conn.
COM2: RS-485/232/422 by Phoenix conn., default is RS-485. (S/W configurable)
- **Ethernet** 1 x 10/100Base-T by RJ-45
- **USB** 1 x USB 1.1 host by type A conn.
- **SD/MMC** 1 x standard slot (support memory and I/O mode)
- **CompactFlash** 1 x type II slot (support memory and I/O mode)
- **Audio** Mic-in, Line-in, Line-out & Speaker-out by expansion conn.
- **Expansion Conn.** 50-pin box headers with: SMBus, Mic-in, Line-in, Line-out, 2-wire RS-232, 1 x USB 1.1 host, 4 x TTL-level DI, 4 x TTL-level DO

Power

- **DC Input** 10 ~ 28 V DC with internal fuse protection via Phoenix conn.
- **Power Switch** Slide type
- **Power Consumption** 6 W (normal mode w/o peripherals connected)
- **Power Management** Supports normal mode and idle mode to turn off the LCD power system

Mechanical

- **Mounting** Inside-out panel mount
- **Material** SPCC

Environment

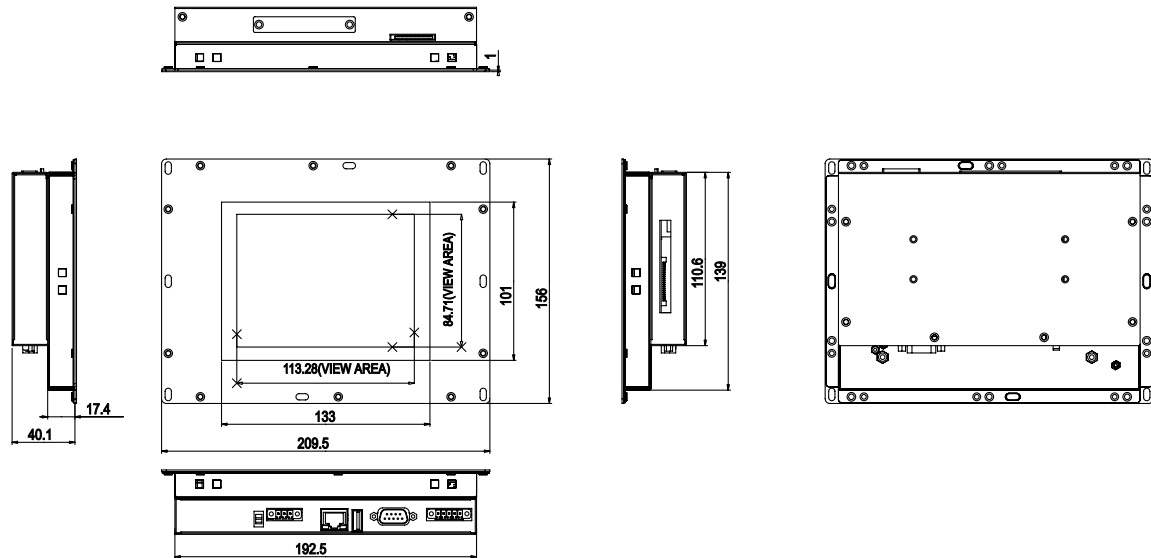
- **Operating Temp** 0 ~ 50° C
- **Storage Temp** -20 ~ 60° C
- **Water/Dust Resistance** IP65 front bezel
- **Certification** CE/FCC/UL

GUI Firmware

- **Adobe Flash player 7.0 support (project base)**
- **Java Virtual Machine support (project base)**

Dimensions

Unit: mm



Ordering Information

Part Number	Description
SPC-58C-347CE1E	Intel XScale PXA270 312 MHz CPU, WinCE 5.0 pre-installed with 5.6" color TFT LCD, resistive touch screen with an open frame architecture

Packing List

Description	Quantity
SPC-58C	1
Windows CE 5.0 end user license agreement (Windows CE 5.0 version)	1
CD-ROM 1) Readme.txt, User Manual and Datasheet 2) Upgrade Utility 3) Windows CE platforms SDK (for Windows CE 5.0)	1
Warranty Card	1
Phoenix power connector	1

I/O Diagram

