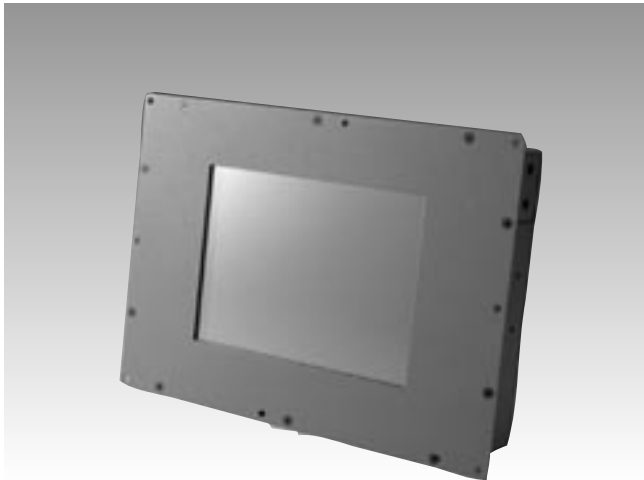


SPC-57E

5.7" STN Smart Panel Computer with Intel XScale® CPU



Features

- Intel XScale® PXA255 200 MHz CPU
- Microsoft Windows® CE .NET ready
- 5.7" color STN LCD panel and resistive touch screen
- Ultra low power consumption and fanless
- Compact size
- IP65 front bezel
- No back cover
- Without I/O external connectors; Pin headers for customer flexibility
- Open-frame model: ideal design for inside-out mounting type

Introduction

The SPC-57E integrates the Intel XScale PXA255 200 MHz processor and Windows CE .NET 4.2 or Embedded Linux Ready (Embedded Linux will support by project based). It is designed to provide customers with a low cost, high performance embedded display platform with good networking and graphic performance. SPC-57E has a bright QVGA (320 x 240) LCD screen and comes without front bezel for inside-out mounting, making it ideal for customers to design their own chassis or housing.

Specifications

System Kernel

- **CPU** Intel PXA255 200 MHz on board
- **OS** Windows CE .NET 4.2 ready, do not include license
- **SDRAM** 64 MB SDRAM on board
- **Flash** N/A
- **WDT** PXA255 internal
- **Boot Loader** 1 MB AMD Flash ROM for boot loader
- **RTC** HT1381

Display

- **LCD** 5.7" color STN QVGA 320x 240
- **Touch Screen** 4 wire resistive touch screen
- **VGA Chip** PXA255 Internal

I/O

- **RS-232** 3 x full function transceiver level RS-232 by pin-header
- **RS-485** 1 x RS-485 by pin header
- **RJ-45** 10/100Base-T; pin headers
- **USB** 2 x USB host and 1 x USB client; pin headers
- **PCMCIA** 1 x PCMCIA slot type II
- **CF** 1 x CF slot type II for 32 MB CF card for OS pre-installed
- **Digital I/O** 8 DI & 8 DO. Pin header output inside the case. Provide API to access DIO
- **GPIO** 8 GPIO. Pin header output inside the case. Default is hotkey
- **Audio** Audio line-out; pin headers

Power

- **V-in Range** DC 10 V ~ 28 V
- **Protection** Power surge protection
Electrical pole reversal protection
- **SM Bus** For smart battery, pin headers, I2C bus
- **System Backup Battery** Rechargeable Li-ion battery 65 mAh for RTC
- **SW Reset** Execute S/W reset through system configuration
- **Power Consumption** 6 W (Typical power consumption w/ OS running and LCD backlight on)

Mechanical

- **Dimensions** Front bezel: 209.5 x 156 mm
- **Material** SPCC

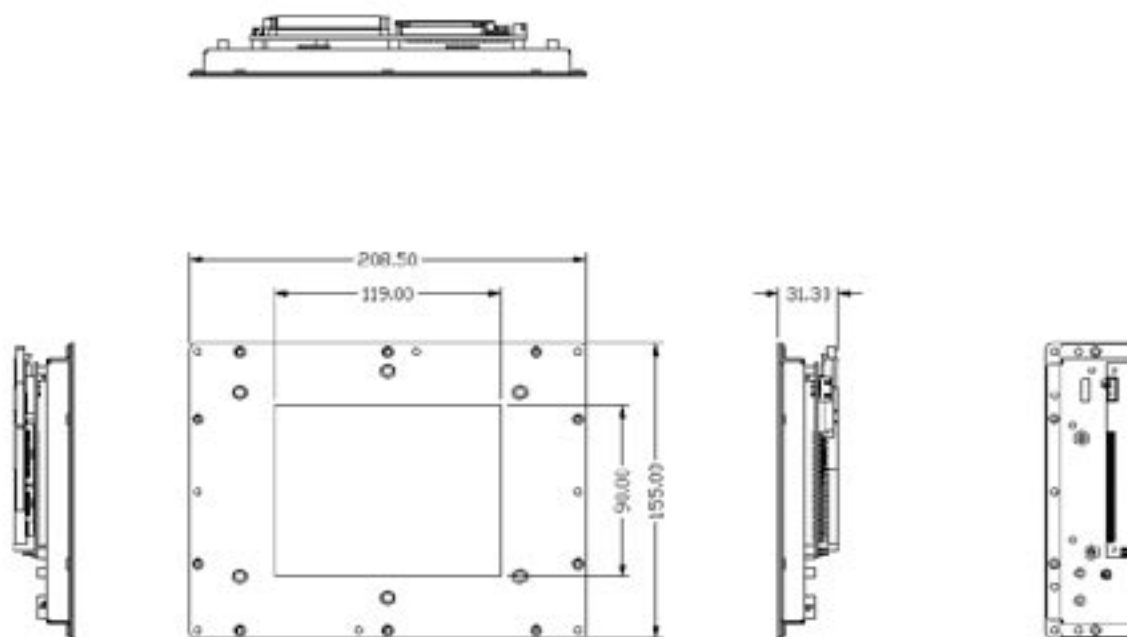
Environment

- **Operating Temp** 0 ~ 50° C
- **Storage Temp** -20 ~ 60° C
- **Water/Dust Resistance** IP65 front bezel
- **Certification** CE/FCC/UL (based on SPC-57C)

Ordering information

- **SPC-57E-240CE1** Intel Xscale PXA-255 200 MHz CPU, with 5.7" color STN LCD and resistive touch screen SPC, without back cover; boot from CF card; CF card is not included in this product, users must get their own CF card and download Evaluation Win CE .NET 4.2 professional plus image from Advantech website.
- **SPC-POWERSET** 60 W power adapter with 3-pin power connector (Customer must purchase power cord separately)

Dimensions



SPC-57E Backside view (cover removed)

Packing List

- Smart Panel Computer
- CD-ROM
 - 1) Readme.txt
 - 2) User's manual
 - 3) Data Sheet
 - 4) Upgrade utility
 - 5) Microsoft ActiveSync Version 3.7 installation files (Windows CE .NET)
 - 6) Windows CE .NET 4.2 platforms SDK (Windows CE .NET)
- Warranty Card
- 1 x USB client ActiveSync cable
- 3-pin power connector with screw hole