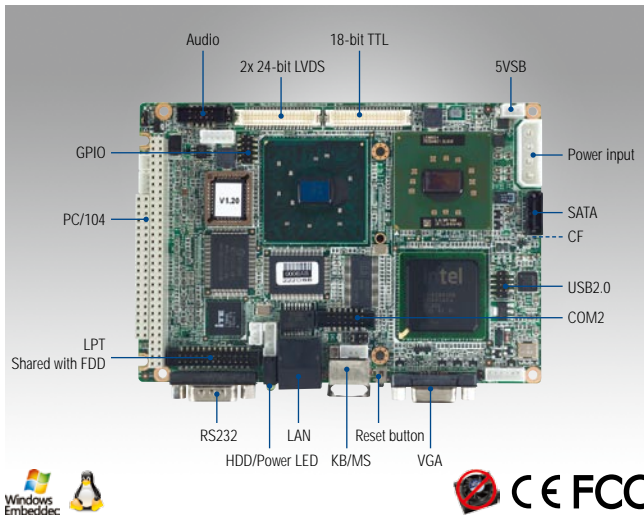


PCM-9388

Intel® Celeron® M Processor ULV 3.5" SBC,
CRT, LCD, LAN, USB, PC/104



Features

- Supports Intel® Celeron® M processor
- Supports 18-bit TTL/36-bit LVDS (48-bit LVDS optional)/ CRT Dual independent display by CRT + LVDS/CRT + TTL
- Fanless support with low profile heatsink
- Full LCD support for 18-bit TTL/2-channel LVDS supports up to 48-bit (Optional)
- Supports embedded software APIs and utilities

Software APIs:

- GPIO
- H/W Monitor
- Watchdog
- Backlight On/Off
- SMBus
- CPU Speed
- System Throttling

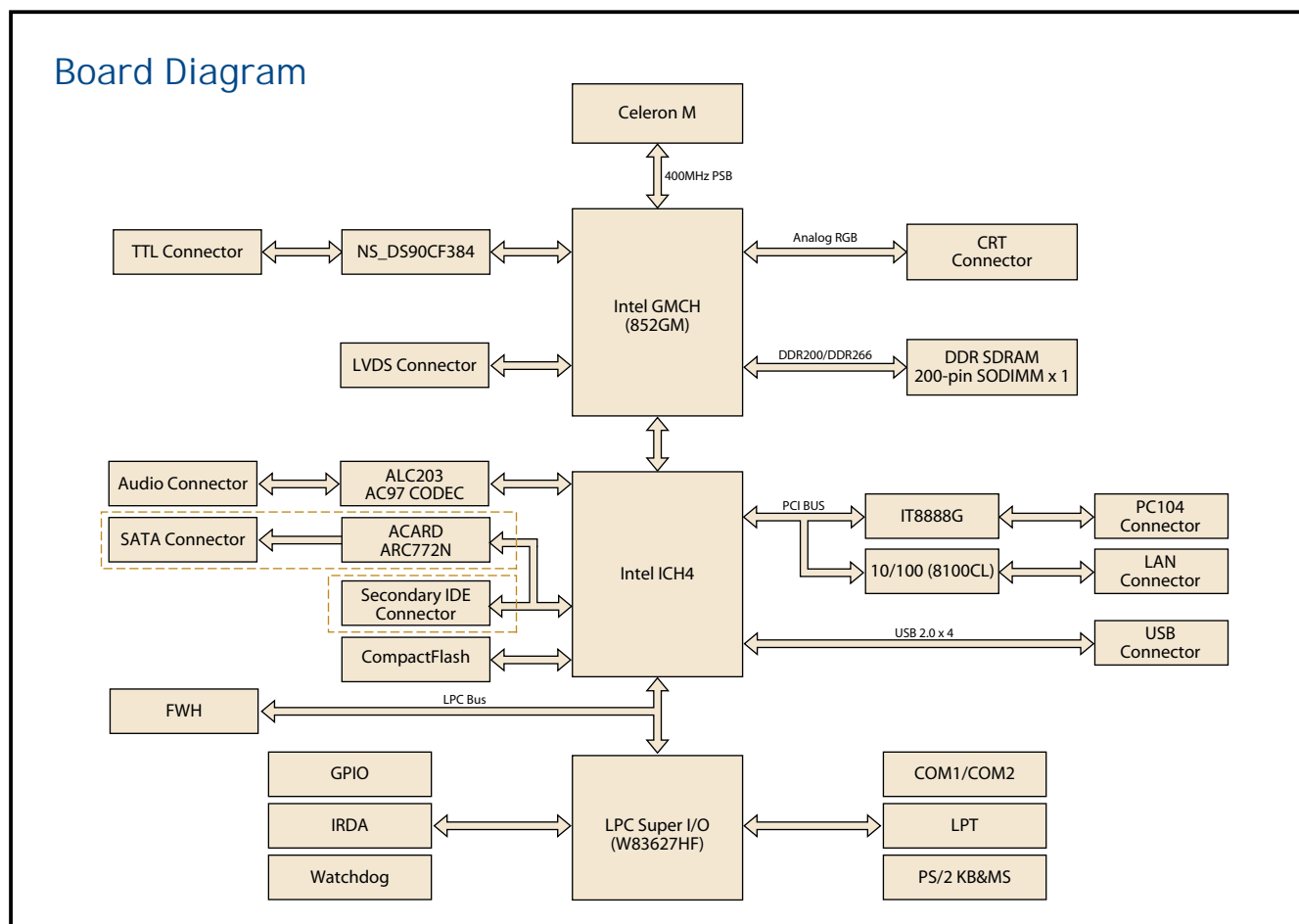
Utilities:

- BIOS flash
- Monitoring

Specifications

Processor System	CPU	Intel Celeron M 600 MHz and 1.0 GHz on board type
	Front Side Bus	400 MHz
	Frequency	600 MHz and 1.0 GHz
	L2 Cache	512 KB on 600 MHz, 0L2 on 1.0 GHz
	System Chipset	Intel 852GM + ICH4
	BIOS	Award 4 Mb Flash ROM BIOS
Memory	Technology	DDR266 MHz SO-DIMM supports
	Max. Capacity	1 GB
	Socket	1 x 200-pin SODIMM
Display	Chipset	Intel 852 GM
	VRAM	Supports 64 MB frame buffer share system memory
	Graphics Engine	Mobile Intel 852 GM integrated 3D/2D engine
	LVDS	1 x 36-bit LVDS (48-bit optional)
	VGA	CRT: up to 1600 x 1200 @ 32 bpp (85 Hz)
	TTL LCD	1 x 18-bit TTL
Ethernet	Dual Display	CRT + TTL, CRT + LVDS
	Speed	10/100 Mbps
	Controller	Realtek RTL 8100CL
Audio	Connector	RJ-45 on LAN
	Chipset	Realtek ALC203 AC97, Line-in, Line-out, Mic-in
WatchDog Timer		Output System reset Programmable 1 - 255 sec
Storage	CompactFlash	1
	SATA	1 (only for PCM-9388S)
	IDE	1 (only for PCM-9388F)
	Floppy	1 (share with LPT)
Rear I/O	Serial	1 (COM1 supports RS-232)
	Ethernet	1 (10/100 Mbps)
	KB/Mouse	1
	VGA	1
	Reset Button	1
Internal I/O	USB	2 x USB 2.0
	Serial	1 x COM COM2 supports RS-232/422/485
	IDE	1 UDMA 33 (only for PCM-9388F)
	Parallel(LPT)	1 (share with FDD)
	FDD	1 (share with LPT)
	SMBUS	Supported
	GPIO	8-bit GPIO
	IrDA	115 kbps
Expansion	PC/104 Slot	PC/104 Expansion(8/16-Bit ISA)
Power	Power Type	AT/ATX
	Power Supply Voltage	5V + 5%, 12V + 5% (LCD)
	Power Consumption (Typical)	Typical: 1.56 A @ 5 V, 0.16 A @ 12 V (Celeron M 600/DDR 256 MB)
	Power Consumption (Max, test in HCT)	MAX: 2.11 A @ 5 V, 0.17 A @ 12 V (Celeron M 600/DDR 256 MB)
	Power Management	APM, ACPI S1, S5
	Battery	3 V / 210 Mah
Environment	Operational	0 - 60° C (32 - 140° F)
	Non-Operational	Operating: 0 - 60° C (32 - 140° F) (Operating humidity: 40° C @ 85% RH non-condensing) Non-Operating: -40° C - 85° C and 60° C @ 95% RH non-condensing
Physical Characteristics	Dimensions (L x W)	146 x 102 mm (5.7" x 4")
	Weight	0.85 kg (1.87 lb), weight of total package

Board Diagram



Ordering Information

Part No.	CPU	CRT	LVDS	TTL	LAN	IDE/SATA	USB	RS-232	RS-232/442/485	LPT	CF	PC/104	Thermal Solution	Operating Temp.
PCM-9388F-M0A1E	Celeron M 600 MHz (512 KB)	1	1	1	1 FE	1 IDE	2	1	1	1	1	1	Passive	0 ~ 60° C
PCM-9388F-S0A1E	Celeron M 1 GHz (0 KB)	1	1	1	1 FE	1 IDE	2	1	1	1	1	1	Passive	0 ~ 60° C
PCM-9388SF-S0A1E	Celeron M 1 GHz (0 KB)	1	1	1	1 FE	1 SATA	2	1	1	1	1	1	Passive	0 ~ 60° C
PCM-9388Z-512S0A1E	Celeron M 1 GHz (0 KB)	1	1	1	1 FE	1 SATA	2	1	1	1	1	1	Passive	-20 ~ 80° C

Packing List

Part No.	Description	Quantity
	PCM-9388 SBC	
	Startup Manual	
	Utility CD	
1701440504	IDE cable (44p/44p/40p)	x 1
1700060202	KB/MS cable	x 1
1701140201	RS-232/422/485 cable	x 1
1700260250	Parallel Port cable	x 1
1703100152	Audio cable	x 1
1703100121	USB cable (2 ports)	x 1

Optional Accessories

Part No.	Description
1703200201	ATX power cable
1700001531	LTP to FDD cable

Embedded OS

Embedded OS	Part No.	Description
WinCE 6.0	2070007811	CE60 Pro Intel (852/855/915/945) 2 COM V1.2 ENG
Win XPE	2070007789	XPE WES2009 Intel-Multitprocess V4.0 ENG

