

- ❑ **PCM-3521**
Flat Panel/CRT Display Module

Features

- Supports a wide range of popular flat panel displays and traditional analog CRT monitors in high resolution.
- A flat panel display and a CRT VGA display can be displayed at the same time.
- On board variable resistor for panel contrast adjustment.

Specifications

- **Chipset:** C&T65545
- **Video Memory:** 1 MB
- **Frame Buffer:** 512 KB
- **LCD Bias Volt. (VEE):** -35 ~ +35 V (by on-board DC-DC converter)
- **Supported LCD Power:** 3.3 V / 5 V
- **Resolution:**
 - B/W panel: Up to 800 x 600 @ 61 gray scales
 - Color panel: Up to 800 x 600 @ 256 colors
 - CRT: Up to 800 x 600 @ 256 colors

Ordering Information

- ❑ **PCM-3521-00A1**
Flat panel/CRT display module



- ❑ **PCM-3610**
Isolated RS-232/422/
485 Module

Features

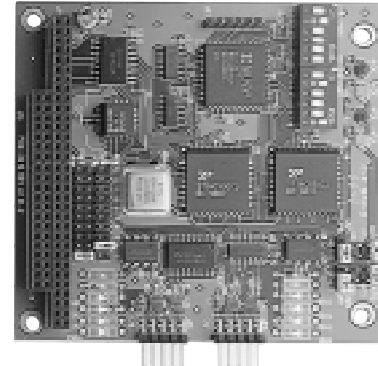
- High speed transmission rate
- Automatic RS-485 data flow control
- Jumper selectable interrupt level

Specifications

- **Channel 1:** RS-232,422,or 485
- **Channel 2:** RS-422, or RS-485
- **Baud rate:** 50 ~ 115,200 bps
- **Character length:** 5,6,7, or 8 bits
- **Parity:** Even, odd, or none
- **Stop bit:** 1, 1.5, or 2
- **Interrupt level:** IRQ 3,4,5,6,7,9
- **I/O connectors:** Dual male DB-9
- **Power consumption:**
+5 V @ 400 mA typical
±12 V @ 950 mA max
- **Isolation:** 500 V_{DC}

Ordering Information

- ❑ **PCM-3610-A**
Isolated RS-232/422/485 module



- ❑ **PCM-3612**
Dual-port RS-422/485
Module

Features

- Long distance communication
- Automatic RS-485 data flow control
- Jumper selectable interrupt level

Specifications

- **Channel 1 and 2:** RS-422, or RS-485
- **Baud rate:** 50 ~ 115,200 bps
- **Character length:** 5,6,7,or 8 bits
- **Parity:** Even, odd, or none
- **Stop bit:** 1, 1.5, or 2
- **Interrupt level:**
IRQ 3,4,5,6,7,9,10,11,12,or 15
- **I/O connectors:** dual male DB-9
- **Power consumption:**
+5 V @ 400 mA typical
±12 V @ 950 mA max
- **LED:**
Red LED for TX
Green LED for RX

Ordering Information

- ❑ **PCM-3612-A**
Dual port RS-422/485 module