

PCLD-8712

User's manual

Copyright

This documentation and the software included with this product are copyrighted 2000 by Advantech Co., Ltd. All rights are reserved. Advantech Co., Ltd. reserves the right to make improvements in the products described in this manual at any time without notice.

No part of this manual may be reproduced, copied, translated or transmitted in any form or by any means without the prior written permission of Advantech Co., Ltd. Information provided in this manual is intended to be accurate and reliable. However, Advantech Co., Ltd. assumes no responsibility for its use, nor for any infringements of the rights of third parties which may result from its use.

Acknowledgments

PC-LabCard is a trademark of Advantech Co., Ltd. IBM and PC are trademarks of International Business Machines Corporation. MS-DOS, Windows, Microsoft Visual C++ and Visual BASIC are trademarks of Microsoft Corporation. Intel and Pentium are trademarks of Intel Corporation, Delphi and C++Builder are trademarks of Inprise Corporation.

Please contact your local supplier for ordering information,

on-line Technical Support

For technical support and service, please visit our support website at.

<http://support.advantech.com>

Contents

Introduction	1
Features	1
Board Layout	1
Pin Assignment	2
Single-ended Connections	3
Differential Connections	4

Introduction

The PCLD-8712 Screw-terminal Board provides convenient and reliable signal wiring for the PCI-1712/1732 of which has a 68-pin SCSI-II connector. Due to its special PCB layout you can install passive components to construct your own signal-conditioning circuits. The user can easily construct a low-pass filter, attenuator or current shunt converter by adding resistors and capacitors on board's circuit pads.

Features

- Low-cost screw-terminal board for the PCI-1712/1732 with 68-pin SCSI-II connector.
- Reserved space for signal-conditioning circuits such as low-pass filter, voltage attenuator and current shunt.
- Industrial-grade screw-clamp terminal blocks for heavy-duty and reliable connections.
- DIN-rail mounting case for easy mounting.
- Dimensions: 169 mm (W) x 112mm (L) x 51mm (H) (6.7" x 4.4" x 2.0")



Board Layout

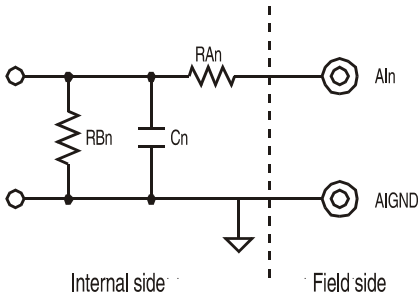
CN1: 68-pin SCSI-II connector for connection with the PCI-1712

CN2: 20-pin connector for digital I/O

Pin Assignment

CN			
DIO 0	1	2	DIO 1
DIO 2	3	4	DIO 3
DIO 4	5	6	DIO 5
DIO 6	7	8	DIO 7
DIO 8	9	10	DIO 9
DIO 10	11	12	DIO 11
DIO 12	13	14	DIO 13
DIO 14	15	16	DIO 15
DGND	17	18	DGND
+5 V	19	20	+12 V

Single-ended Connections



where $n=0, 1, 2, \dots, 15$

- a) Straight-through connection (factory setting)

$R_{An} = 0 \Omega$ (short)

$R_{Bn} = \text{none}$

$C_n = \text{none}$

- b) 1.6 kHz (3dB) low pass filter

$R_{An} = 10 \text{ k} \Omega$

$P_{Bv} = \text{vov}\epsilon$

$X_v = 0.01 \propto \Phi$

$\phi_{3\text{dB}} =$

- c) 10 : 1 voltage attenuator:

$R_{An} = 9 \text{ k} \Omega$

$P_{Bv} = 1 \text{ k} \Omega$

$X_v = \text{vov}\epsilon$

$\text{Αττενυατιον} =$

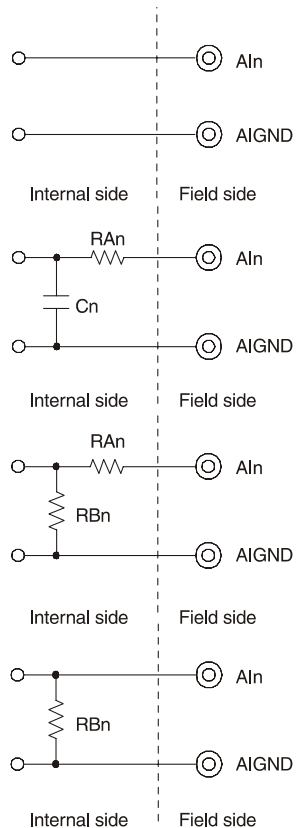
- d) 4 ~ 20 mA to $1 \frac{R_{Bn}}{R_{An}} \frac{5 \text{V}_{DC}}{DC}$ signal

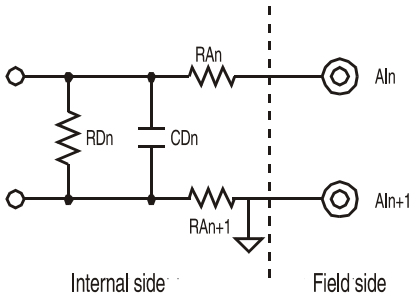
converter:

$R_{An} = 0 \Omega$ (short)

$R_{Bn} = 250 \Omega$ (0.1% precision resistor)

$C_n = \text{none}$





where $n = 0, 2, 4, \dots, 14$

Differential Connections

- a) Straight-through connection (factory setting):

$$R_{An} = 0 \Omega \text{ (short)}$$

$$R_{An+1} = 0 \Omega \text{ (short)}$$

$$R_{Dn} = \text{none}$$

$$C_{Dn} = \text{none}$$

- b) 1.6 kHz (3dB) low pass filter

$$R_{An} = 5 \text{ k}\Omega$$

$$R_{An+1} = 5 \text{ k}\Omega$$

$$R_{Dn} = \text{none}$$

$$C_{Dn} = 0.01 \mu\text{F}$$

$$f_{3\text{dB}} =$$

- c) 10 : 1 voltage attenuator:

$$R_{An} = 4.5 \text{ k}\Omega \frac{R_{Dn}}{R_{An} + R_{An+1} + R_{Dn}}$$

$$R_{An+1} = 4.5 \text{ k}\Omega$$

$$R_{Dn} = 1 \text{ k}\Omega$$

$$C_{Dn} = \text{none}$$

$$\text{Attenuation} =$$

- d) 4 ~ 20 mA to 1 ~ 5 V_{DC} signal

converter:

