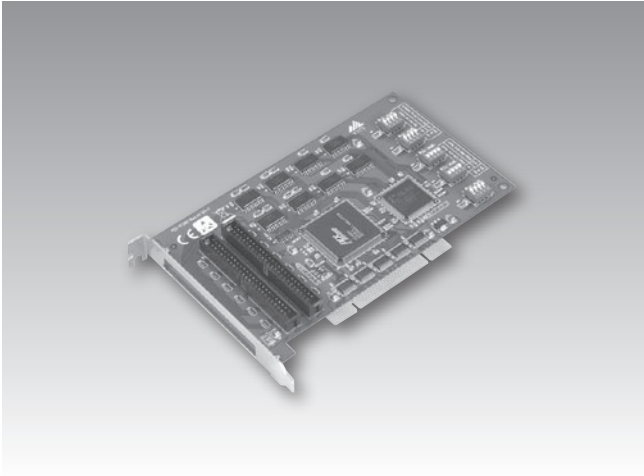


# PCI-1739U

## 48-ch Digital I/O Universal PCI Card



### Features

- ISA-Compatible with PCL-731
- 48 TTL digital I/O channels
- Emulates mode 0 of 8255 PPI
- Interrupt handling
- Opto-22 compatible 50-pin connectors
- Output status readback
- PCI universal card

### Specifications

#### Digital Input

- **Channels** 48 (shared with output)
- **Compatibility** 5 V/TTL
- **Input Voltage** Logic 0: 0.8 V max.  
Logic 1: 2.0 V min.
- **Interrupt Capable Ch.** 2

#### Digital Output

- **Channels** 48 (shared with input)
- **Compatibility** 5 V/TTL
- **Output Voltage** Logic 0: 0.4 V max.  
Logic 1: 2.4 V min.
- **Output Capability** Sink: 0.4 V max. @ 24 mA  
Source: 2.4 V min. @ 15 mA

#### General

- **Bus Type** PCI V2.2
- **I/O Connectors** 2 x 50-pin male ribbon-cable connectors
- **Dimensions (L x H)** 175 x 100 mm (6.9" x 3.9")
- **Power Consumption** Max: +5 V @ 540.8 mA
- **Operating Temperature** 0 ~ 65° C (32 ~ 149° F)
- **Storing Temperature** -25 ~ 80° C (-13 ~ 176° F)
- **Storing Humidity** 5 ~ 95% RH, non-condensing (refer to IEC 68-2-3)

### Ordering Information

- **PCI-1739U** 48-ch Digital I/O Card
- **PCL-10150-1.2** IDC-50 Flat Cable, 1.2 m
- **PCLD-782B** 16/24-ch Opto-isolated DI Board
- **PCLD-785B** 16/24-ch Relay Output Terminal
- **PCLD-7216** 16/24-ch Relay Output Terminal
- **PCLD-885** 16-ch Power Relay Output Terminal
- **ADAM-3950** 50-pin Flat Cable Terminal, DIN-rail Mount