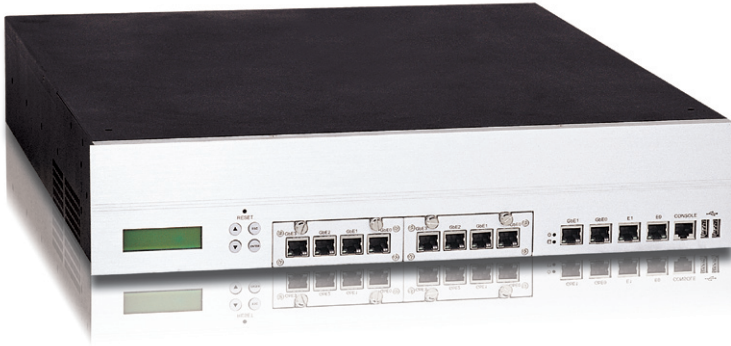




NAR-7080

2U communication appliance rack-mount server with redundant PSU and flexible Ethernet modules



FEATURE

- Dual Intel® Nocona CPU with 1/2M L2 cache/ 800MHz FSB
- Flexible removable Ethernet modules
- Up to Twelve Gigabit Ethernet ports
- Optional crypto PMC card
- Four DDR400/DDR2 memory slots
- Up to two PCI-X expansion slots
- Redundant 460W ATX PSU
- Front access for user-friendly maintenance
- Optional crypto solution
- Bypass option

SPECIFICATION

CPU Board	- Support dual Intel® Nocona processor with 1/2MB L2 cache - Intel® E7520 chipset with 800MHz FSB
System Memory	- Up to 8GB DDR400/DDR2 registered memory with ECC support
Ethernet Port	- Two 64bit/133MHz Gigabit Ethernet ports (Intel® 82546) - Two 10/100Mbps Ethernet ports (Intel® 82551) - Two flexible Ethernet modules with up to four GbE ports for each module
Expansion Slot	- Up to two PCI-X expansion slots - One internal PMC connector
Storage Device	- Two optional swappable SATA 2.5" HDD - One SATA 3.5" HDD - CompactFlash - Disk on Module (DOM)
Serial Port	- One RJ45 connector (for system console) - One 2x5 pin-connector
LCD Panel	2x16 characters LCD module with 4-buttons
LEDs	LED indicator for power status and storage access
IDE	- Two SATA connectors - One 40pin IDE connector
USB	2
VGA	N/A
Power	Full-range 460W ATX 1+1 redundant PSU
Dimension	443(W) x 518(D) x 88(H) mm 17.44"(W) x 20.4"(D) x 3.46"(H)
Packing Dimension	24.9"(W) x 24.9"(D) x 8.4"(H) (Subject to change without notice)
Operating Environment	- Temperature: 5 to 40°C (67 to 130°F) - Humidity 20% to 90% RH
Storage Environment	- Temperature: 0 to 70°C (58 to 184°F) - Humidity 5% to 95% RH
Certification	CE/FCC/UL

460W 1+1 redundant PSU



Ethernet Modules

Ordering No.

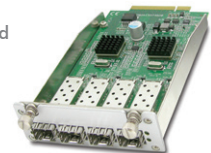
AKN-374-2

4xRJ45 PCI-E Ethernet card with Intel® 82571EB



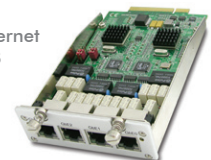
AKN-384-2

4xSFP PCI-E Ethernet card with Intel® 82571EB



AKN-394-2

4xRJ45 PCI-E bypass Ethernet card with Intel® 82571EB



ORDERING GUIDE

Part No.	Ethernet	EZIO	PCI-X Expansion
NAR-7080-1250	- 2 Copper GbE - 2 10/100 FE - 2 Ethernet Modules	Yes	2