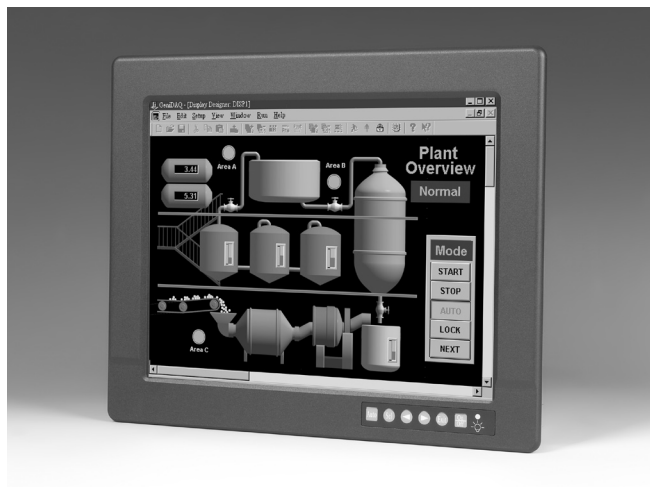


FPM-3120G

FPM-3121G

Industrial 12" SVGA/XGA Flat Panel Monitor with Direct-VGA Port



Features

- 12.1" SVGA/XGA TFT LCD with resolution up to 800 x 600 / 1024 x 768
- Robust design with stainless steel chassis and aluminum front panel
- Hard anodic coating to prevent panel abrasion and acid corrosion
- Anti-reflective screen with tempered glass
- Supports stainless steel front panel (Customization)
- OSD control pad on front panel
- Supports transreflective LCD technology (Customization)
- Supports Panel, Wall, Desktop, Rack or VESA arm mounting
- NEMA4 / IP65 Compliant
- RoHS Compliant

Introduction

FPM-3120G and FPM-3121G are 12-inch color TFT LCD flat panel monitors specially designed for industrial or public applications with limited installation space. With a new industrial design, mounting is extremely easy and fits most environments perfectly. The FPM-3120G and FPM-3121G feature Direct-VGA signal transmissions to allow a regular VGA control card to be used in your system. Users can thus upgrade the display without making changes to the existing system. Its onscreen display function lets users adjust the image easily. The whole chassis is stainless steel and the front panel is made of aluminum with NEMA4/IP65 compliance.

Specifications

General

- **Button Controls** OSD (Onscreen Display) control pad on front panel
- **Certification** BSMI, CCC, CE, FCC-B
- **Dimension (WxHxD)** 312 x 244 x 44.6 mm (12.3" x 9.6" x 1.8")
- **Enclosure** Front panel : Aluminum with hard anodic coating,
Rear cover : Stainless steel chassis
- **Mounting** Panel, wall, desktop, VESA arm, or 19" rackmount with optional mounting kit
- **Power Input** External 42 W power adapter, with AC 100 V ~ 240 V input and DC +12 V @ 3.5 A output
- **Video Port** VGA
- **Weight (Net)** 4.07 kg (8.975 lbs)

LCD Display

- **Display Type** SVGA/XGA TFT LCD (Toshiba)
- **Display Size** 12.1"
- **Max. Resolution** 800 x 600 / 1024 x 768
- **Max. Color** 262K
- **Viewing Angle(H, V)°** 140, 120 / 100, 120
- **Luminance (cd/m2)** 350
- **Backlight Life (hrs)** 50,000
- **Contrast Ratio** 200 : 1 / 350: 1

Touchscreen (Optional)

- **Sensor** 3M
- **Type** 8W Resistive
- **Interface** RS-232
- **Lifespan** 1 million touches at a single point
- **Light Transmission** 79%±2
- **OS Support** Windows® 95/98/ME/2000/XP/CE/NT, Linux
- **Power Consumption** +5V @ 100 mA
- **Touch Resolution** Linearity

Environment

- **Operation Temperature** 0 ~ 50° C (32 ~ 122° F)
- **Storage Temperature** -20 ~ 60° C (-4 ~ 140° F)
- **Humidity (Storage)** 10 ~ 95% non-condensing
- **Waterproof** IEC529 IP65 (Front Panel)
- **Vibration** 5~500 Hz, 1 Grms (Operating, Random)

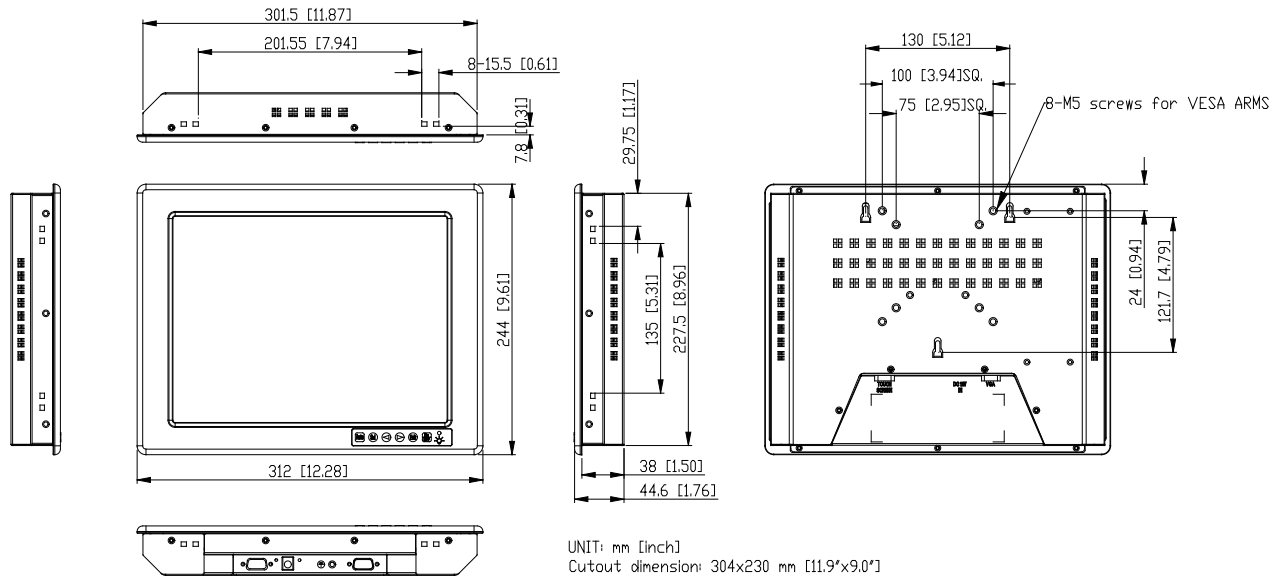
Ordering Information

- **FPM-3120G-XA** Industrial 12" SVGA Flat Panel Monitor
- **FPM-3120G-RA** FPM-3120G-XA with resistive touchscreen (RS-232 interface)
- **FPM-3120G-XAE** Industrial 12" SVGA Flat Panel Monitor (RoHS Compliant)
- **FPM-3120G-RAE** FPM-3120G-XAE with resistive touchscreen (RS-232 interface) (RoHS Compliant)
- **FPM-3121G-XAE** Industrial 12" XGA Flat Panel Monitor (RoHS Compliant)
- **FPM-3121G-RAE** FPM-3121G-XAE with resistive touchscreen (RS-232 interface) (RoHS Compliant)
- **FPM-2150DESK-MT** Mounting kit for desktop and wall
- **FPM-2150DESK-MTE** Mounting kit for desktop and wall (RoHS Compliant)

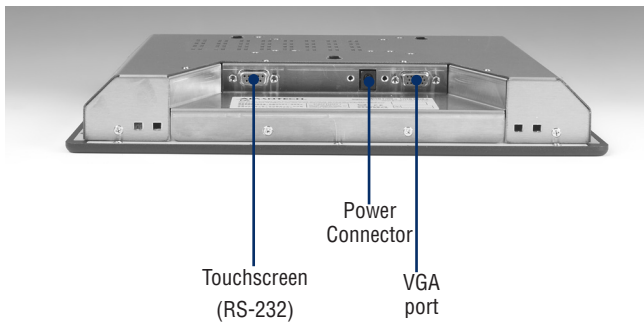
FPM-3120G / FPM-3121G

Dimensions

Unit: mm



I/O View



With Desktop Stand

