

AREMO-4184 AREMO-6182

6-slot industrial node chassis



AREMO-4184

FEATURES

- Magic design for wall-mount, desk-top and rack-mount application
- Rugged steel node chassis suitable for harsh environment
- One built-in 12cm ball-bearing fan for better ventilation
- Built-in 1U ATX type power supply
- Support one external 5.25" and one internal 3.5" disk drive
- Optional one external 5.25" and one internal 3.5" disk drive
- Optional kit to combine two AREMO-6182 for the rack-mount application



AREMO-6182

ORDERING GUIDE

- **AREMO-4184-06P3-35X**
Two sets of AREMO-6182 with rack-mount kit, 6-slot (3xPCI) PICMG backplane and 350W 1U ATX, active PFC power supply

GENERAL

Construction	Heavy-duty steel
Drive Bay	External: 5.25" x1 (each system) Internal: 3.5" x1 (each system)
Card Retainer	Two locations for one card retainer
Air Filter	One replaceable air filter at the front door
Cooling Fan	One 12 cm ball-bearing fan
Indicator	Power on/off x1, HDD x1
Switch	Power on/off (with a protection cap) x1, System reset x1
Speaker	One 8 Ω speaker
Connector	2 USB ports
Standard Color	Black, Silver
Dimension	AREMO-4184: 482(W) x 448(D) x 177(H) mm; 19"(W) x 17.6"(D) x 7"(H)
Weight	AREMO-6182: Net: 6.5 kg (34.4 lb); Gross: 8.0 kg (38.9 lb) AREMO-4184: Net: 15.5 kg (34.3 lb); Gross: 17.5 kg (38.6 lb)
Backplane	PBP-06P3: 6-slot (3xPCI) PICMG backplane PBP-06P4: 6-slot (4xPCI) PICMG backplane PBP-06I: 6-slot (6xISA) PICMG backplane

POWER SUPPLY

FSP350-601UA optional

Input Voltage	90V ~ 135V, 180V ~ 265V AC
Input Frequency	47 ~ 63 Hz
Input Current	6A@115V, 3A@230V
Efficiency	> 65%
Holdup Time	18m Sec
Over Voltage Protection	+3.3V: 4.5V; +5V: 6.5V; +12V: 15.6V
Over Power/Load Protection	+3.3V: 45A; +5V: 45A; +12V: 20A
MTBF	100,000 hrs
EMI & Safety Approval	UL, CSA, VDE, FCC, CE, NEMKO
Temperature/Humidity	Operating: 0 ~ 50°C, 20 ~ 80%RH Storage: -40 ~ 70°C, 10 ~ 90%RH
Dimension (WxDxH)	150x140x86 mm; 5.9"x5.5"x3.4"

ENVIRONMENT

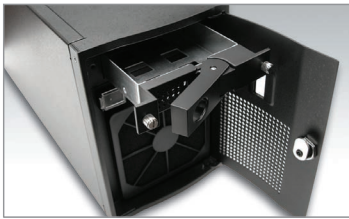
Operating Temperature Range	0 to +40°C
Storage Temperature Range	0 to +70°C
Relative Humidity	5% to 95%, non-condensing
Vibration	5~7 Hz: 0.5" double amplitude displacement 7~2000 Hz: 1.5g acceleration

AREMO-4184 AREMO-6182

6-slot industrial node chassis

FEATURE	BENEFITS
<ul style="list-style-type: none"> One 5.25" drive bay for EZDRV 	<ul style="list-style-type: none"> For both CD-ROM and FDD support or Hot-swappable HDD
<ul style="list-style-type: none"> Front replaceable air filter 	<ul style="list-style-type: none"> For easy cleaning & exchange
<ul style="list-style-type: none"> Two adjustable positions for hold-down card retainer 	<ul style="list-style-type: none"> For fixing all the cards more flexibly and tightly
<ul style="list-style-type: none"> Both 6-slot ISA and PICMG backplane applicable 	<ul style="list-style-type: none"> Easy to change to different backplane and keep stock
<ul style="list-style-type: none"> 350W midro-ATX power supply 	<ul style="list-style-type: none"> Save the space inside the chassis
<ul style="list-style-type: none"> Special kit to combine dual systems into 4U space 	<ul style="list-style-type: none"> Can be integrated as a fault tolerant system

WHAT'S NEW



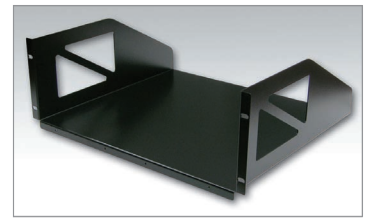
Special Configuration with EZDRV

The use of EZDRV enables AREMO-6182 to support one more NB FDD



Can be Mounted in Different Styles

AREMO-6182 can be either vertically or horizontally installed



Easy-To-Use Control Panel

All the switches and LEDs are located on the front panel for direct operation

ENGINEERING DRAWING

