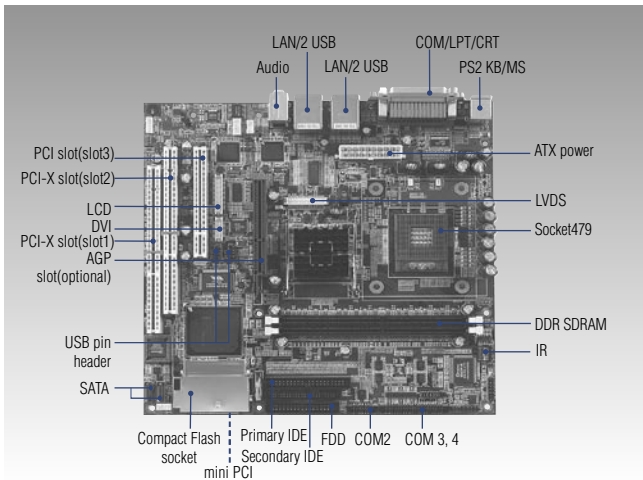


AIMB-350

Socket 478 EmbeddedATX/MicroATX w/ LVDS, USB, AGP, Audio



System

General

- **CPU** Socket 478 support Intel Pentium M (Banias)
- **2nd Cache Memory** 1 MB on the Pentium M (Banias) processor/2 MB on the Dothan processor
512 KB on Celeron M processor
- **System Chipset** Intel 855GME + 6300ESB Chipset
- **BIOS** Phoenix® award 512 kbit Flash BIOS
- **System Memory** 2 x DDR DIMM, Max. 2 Gb
- **Power Management** APM/ACPI
- **SSD** CompactFlash® card support
- **Watchdog Timer** 255 levels interval, System reset
- **Expansion Interface** 1 x PCI-X (slot 1, embATX only)
1 x PCI-X, 1 x PCI (slot2, 3, for MicroATX only)
1 x miniPCI AGP (optional)
- **Battery** Lithium 3 V/195 mAh (CR2032)

I/O

- **I/O Interface** 2 x EIDE (40-pin Ultra DMA 66 & 100 and 44-pin Ultra DMA 33), 1 x K/B, 1 x mouse, 1 x RS-232/422/485, 3 x RS-232, 1 x LPT, 1 x FDD
- **USB** 8 x USB 2.0
- **Audio** Supports AC' 97
- **IrDA** 115.2 kbps, IrDA 1.0 compliant
- **GPIO** 4 TTL digital out, 4 TTL digital in

Ethernet

- **Chipset** Dual Intel 82551ER, Dual Giga LAN 82541GI (optional)
- **Speed** 10/100Base-T or 1000Base-T
- **Interface** 2 x RJ45 connectors
- **Standard** IEEE 802.3, IEEE 802.3u, IEEE 802.3z/ab (optional)

Features

- Socket 478 supports Intel® Pentium® M / Celeron® M processors
- Memory up to 2 GB DDR RAM (200/266/333 MHz) ECC function supported
- Supports 2 SATA-150
- Expansion slot: 1 slots PCI-X; 1 slot PCI-X and 1 slot PCI 2.2 (only for AIMB-350M)
- Supports Dual Gigabit LAN ports
- Supports 8 ports USB 2.0
- 2/4 serial ports, one RS-232/422/485, another is RS-232
- Supports TV-out
- Supports Dual display function
- Display interface: DVI, CRT, LCD panel (LVDS/TTL)
- Supports AGP slot (optional)

Display

- **Chipset** Intel 855GME GMCH/ 6300ESB
- **Memory Size** Direct Memory Execution model to use system 64 MB memory
- **Resolution** Maximum 3D Resolution Supported:
1600 x 1200 @ 32 bpp at 85 Hz
Maximum Video Overlay Display Resolution:
1600 x 1200 @ 32 bpp at 60 Hz
1280 x 1024 @ 32 bpp at 85 Hz
- **Dual Independent Display** CRT+ LCD panel (LVDS/TTL)
CRT + DVI

Mechanical and Environmental

- **Dimension (L x W)** 244 x 244 mm (9.6" x 9.6")
- **Weight** 0.6 kg (weight of single board)
- **Operating Temperature** 0 ~ 60° C (32 ~ 140° F), operating
- **Operating Humidity** 0% ~ 90% relative humidity, noncondensing
- **Power Supply Voltage** +5 V ±5 %, +12 V ±5 %, -12 V ±5 %
- **Power Consumption** +12 V (CPU) @ 0.33 A, +5 V @ 2.46 A, +3.3 V @ 2.6 A (Pentium III 1.7 GHz, DDR333 DIMM x 2, up to 1 GB)

1
System On Modules

2
Stackable Modules

3
Single Board Computers

4
Slot CPU Cards

5
Industrial Motherboards

6
Embedded Box Computers

7
Panel PCs

8
Ubiquitous Computing

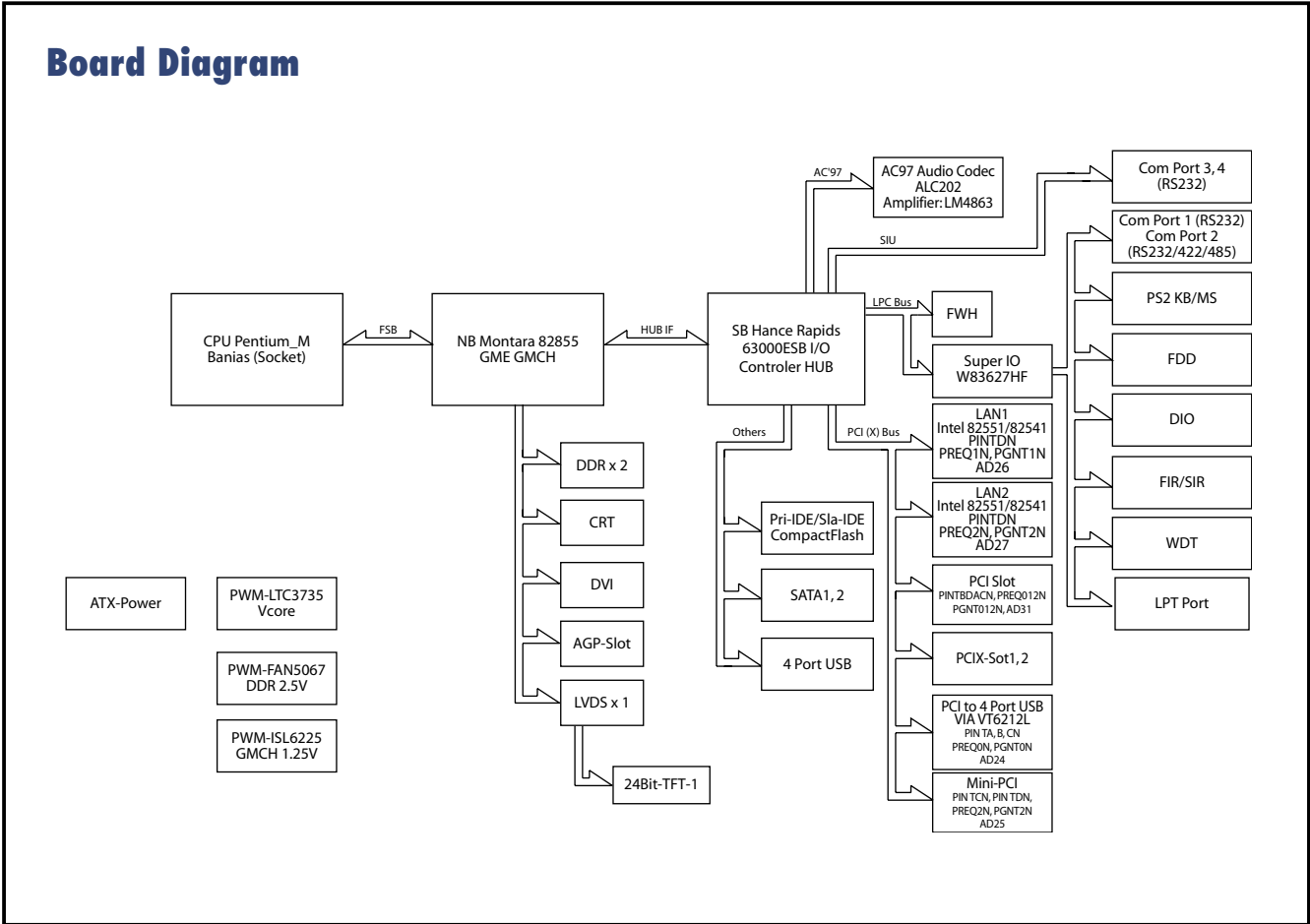
9
Digital Storage & Display Solutions

10
Vehicle Mounted Computing Platforms

11
Medical Computing Platforms

12
Embedded Software Solutions

Board Diagram



Packing List

- 1 x AIMB-350 SBC
- 1 x UDMA/66 IDE flat cable
- 1 x Startup Manual
- 1 x Utility CD

(p/n: 1701400452)

Optional Accessories

- UDMA/100 IDE flat cable (p/n: 1700000364)
- DMA/33 IDE flat cable 44 pin to 40 pin (p/n: 1701440350)
- USB cable (2.54 mm) (p/n: 1700000719)
- DVI cable (p/n: 1700000410)
- FDD cable (p/n: 1701340700)
- SATA cable (p/n: 1700001054)
- P4 CPU FAN (p/n: 1750000069)
- COM2 (W/485/422) (p/n: 1701140201)
- COM3/4 20-pin cable 20 (22 CM) (p/n: 1701200220)

Ordering Information

Standard	AGP	LVDS	TTL	DVI	TV out	10/100	Giga	SATA	USB	RS-232	RS-232/422/485	GPIO	LPT	CF	miniPCI	PCI	PCI-X
AIMB-350F-00A1	x	1	1	v	v	2	x	2	8	3	1	4 in, 4 out	1	v	v	1	2
AIMB-350L-00A1	option	x	x	x	x	1	x	2	4	3	1	4 in, 4 out	1	v	v	x	1
AIMB-350G-00A1	x	1	1	v	v	x	2	2	8	3	1	4 in, 4 out	1	v	v	1	1