

AIMB-251

Fanless Mini-ITX Motherboard Supports Dual Display for CRT, LVDS, DVI and TV-Out

NEW



RoHS COMPLIANT 2002/95/EC CE FCC

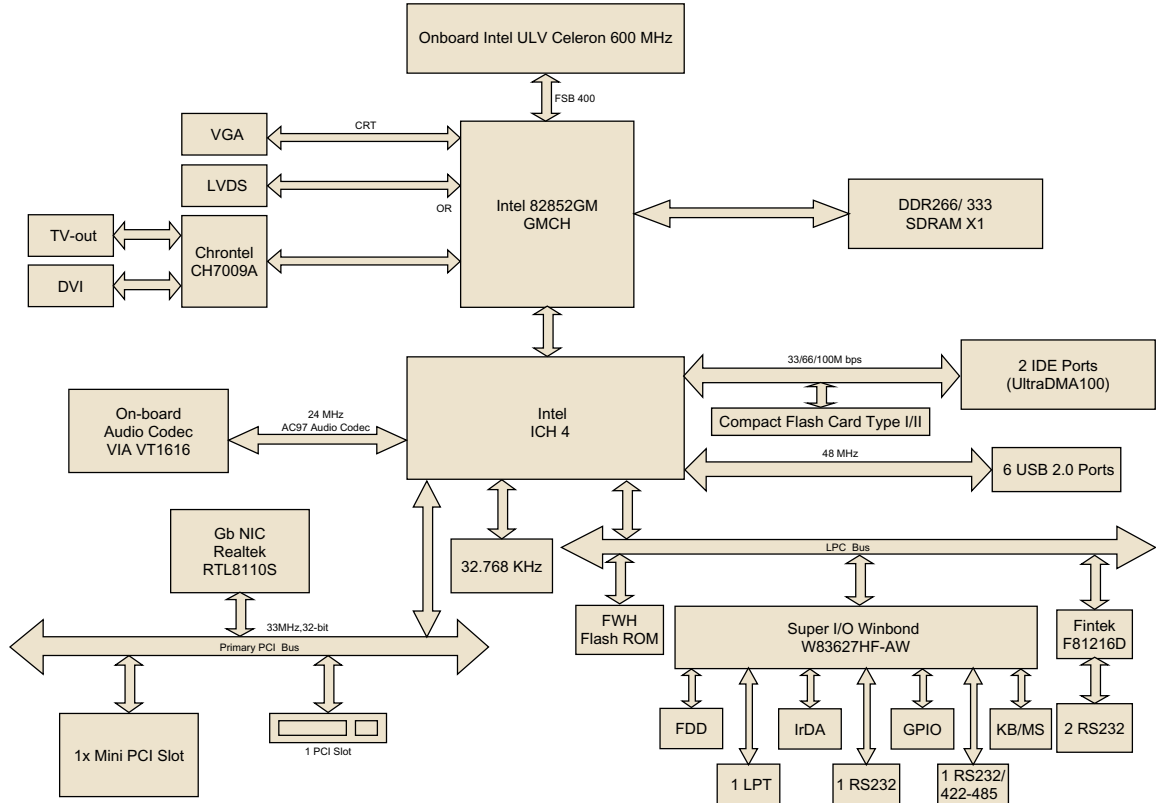
Features

- Onboard Intel® ULV 600 MHz processor
- Intel 82852GM Chipset
- One DIMM socket supports up to 1 GB DDR 200/266 SDRAM
- 2-CH LVDS, DVI
- 5.1 CH Audio, TV-out
- Realtek™ RTL8110S Gigabit LAN
- One PCI, one Mini PCI, Type I/II CF
- Four COM, six USB 2.0, 16-bit GPIO

Specifications

Processor System	CPU	Onboard Intel ULV Celeron® 600 MHz			
	Max. Speed	600 MHz			
	Front Side Bus	400 MHz			
	L2 Cache	512 KB			
	Chipset	Intel 82852GM + ICH4			
	BIOS	Award™ 4 Mb FWH			
Expansion Slot	PCI	32-bit/33MHz, 1 slot			
	Mini-PCI	32-bit/33MHz, 1 slot			
Memory	Technology	DDR 200/266 SDRAM			
	Max. Capacity	1GB			
	Socket	One 184-pin DIMM socket			
Graphic	Controller	Chipset Integrated VGA Controller			
	VRAM	Shared system memory up to 64 MB video memory			
	LVDS	Single channel 18-bit/ Dual-channel 36-bit LVDS			
	TV-Out	Supports both S-video and composite video			
	DVI	Chrontel CH7009A DVI transmitter up to 135M pixels/second			
	Dual Display	CRT + LVDS, or DVI/TV-out + LVDS or CRT + DVI			
Ethernet	Interface	10/100/1000Base-T			
	Controller 1	LAN 1 Realtek™ RTL8110S Gigabit LAN (PCI)			
	Connector	1 (RJ45)			
EIDE	Mode	2 x EIDE (Ultra DMA 100)			
	Channel	2			
Rear I/O	VGA	1			
	Ethernet	1			
	USB	2 (USB 2.0 ports)			
	Audio	Mic-In, Line-In, Line-Out (VIA VT1616 supports 5.1 CH AC97 Audio)			
	Parallel	1			
	Serial	1 (RS-232/422/485), supply 5 V or 12 V via jumper			
	PS/2	2 (keyboard and mouse)			
Internal Connector	LVDS	1			
	TV-Out	1			
	DVI	1			
	USB	4 (USB 2.0 ports)			
	Serial	3 (RS-232)			
	IDE	2 (40/44 Pin)			
	Compact Flash	1			
	IrDA	115k bps, IrDA 1.0 compliant			
	FDD	1			
	DIO	16-bit General Purpose I/O for DI and DO			
Watchdog Timer	Output	System reset			
	Interval	Programmable 1 – 255 sec			
Power Requirement	Typical	Celeron 600 MHz, 1 GB DDR SDRAM			
		+5 V	+3.3 V	+12 V	+5 VSB
		1.58 A	4.66 A	0.05 A	0.4 A
		Operating			
Environment	Temperature	0 – 60° C (32 – 140° F)			
		Physical Characteristics			
Physical Characteristics	Dimensions	170 mm x 170 mm (6.69" x 6.69")			

Block Diagram



Ordering Information

Part Number	Specification
AIMB-251F-00A1E	Intel® ULV Celeron 600 MHz Mini ITX Motherboard with VGA, 2-CH LVDS, DVI, TV-out, 5.1 CH Audio, Gb LAN, CF, PCI, Mini PCI, 4 COM, 6 USB 2.0 & GPIO

Packing List

Description	Quantity
AIMB-251 SBC	x 1
IDE HDD cable (40 pin)	x 1
IDE HDD cable (44 pin)	x 1
FDD cable	x 1
CPU Cooler	x 1
I/O port bracket	x 1
Startup Manual	x 1
Driver CD	x 1
Serial cable (RS-232)	x 3

Bracket View



AIMB-251F-00A1E

Accessory

Part Number	Description
1700003434	TV-Out cable
1700003433	USB cable
1700003435	DVI cable