

ADAM-6017

ADAM-6018

ADAM-6024

8-channel Analog Input w/DO Module

8-channel Thermocouple Input w/DO Module

12-channel Universal Input/Output Module



ADAM-6017

CE FCC



ADAM-6018

CE FCC



ADAM-6024

CE FCC

Specifications

General

- Power Consumption 2 W
- Watchdog Timer Yes, programmable (Comm.)

Analog Input

- Channels 8 differential
- Input Impedance 20 MΩ
- Input Type mV, V, mA
- Input Range ±150 mV, ±500 mV, ±5 V, ±10 V, 0-20 mA, 4-20 mA
- Isolation Voltage 2000 V_{DC}
- Sampling Rate 10 samples/sec.

Digital Output

- Channels 2
Open Collector to 30 V
100 mA max. load
- Optical Isolation 2,000V_{RMS}

Protection

- Fault and Overvoltage Protection Withstands overvoltage up to ±35 V

Ordering Information

- ADAM-6017 8-channel Analog Input with DO Module

Specifications

General

- Power Consumption 2 W
- Watchdog Timer Yes, programmable (Comm.)

Analog Input

- Channels 8 differential
- Input Impedance 10 kΩ
- Input Type Thermocouple
- Isolation Voltage 2000 V_{DC}
- Thermocouple Type and Thermocouple Range:

J	0	~	760° C
K	0	~	1370° C
T	-100	~	400° C
E	0	~	1000° C
R	500	~	1750° C
S	500	~	1750° C
B	500	~	1800° C
- Sampling Rate 10 samples/sec.

Digital Output

- Channels 8
Open Collector to 30 V
100 mA max. load
- Optical Isolation 2,000 V_{RMS}

Protection

- Fault and Overvoltage Protection Withstands overvoltage up to ±35 V

Ordering Information

- ADAM-6018 8-channel thermocouple input with DO module

Specifications

General

- Power Consumption 4 W (typical)

Analog Input

- Channels 6 differential
- Input Impedance 20 MΩ
- Input Range ±10 V_{DC}, 0 ~ 20 mA, 4 ~ 20 mA, 2,000 V_{DC}
- Isolation Protection 10 samples/sec.
- Sampling Rate 10 samples/sec.

Analog Output

- Accuracy 0.05% of FSR
- Channels 2
- Drift ±50 ppm/° C
- Drive Voltage 15 V_{DC} (current output)
- Isolation Voltage 2,000 V_{DC}
- Output Range 0 ~ 10 V_{DC}, 4 ~ 20 mA, 0 ~ 20 mA, 12 bits

Digital Inputs

- Channels 2
Dry Contact: Logic level 0: close to GND
Logic level 1: open
Logic level 0: +3 V_{max}
Logic level 1: 10~30 V_{DC}
- Wet Contact:

Digital Outputs

- Channels 2, Open Collector to 30 V, 100 mA max. load

Ordering Information

- ADAM-6024 12-channel Universal Input/Output Module

Common Specifications

General

- Certifications CE, FCC class A
- Dimensions (WxHxD) 70 x 112 x 25 mm
- Connectors 1 x RJ-45 (LAN)
Plug-in screw terminal block (I/O, and power)
- Enclosure ABS+PC
- LAN 10/100Base-T
- LED Indicators Power and communication

- Mounting DIN 35 rail, stack, wall
- Power Input Unregulated 10~30 V_{DC}

Analog Input

- Accuracy ±0.1% or better
- Bandwidth 13.1 Hz @ 50 Hz, 15.72 Hz @ 60 Hz
- CMR @ 50/60 Hz 92 dB min.
- Resolution 16 bits
- Span Drift ±25 ppm/° C
- Zero Drift ±6 μV/° C

Environment

- Humidity (Operating) 20 ~ 95% RH (non-condensing)
- Humidity (Storage) 0 ~ 95% RH (non-condensing)
- Operating Temperature ADAM-6017/6018: -10 ~ 70° C
ADAM-6024: -10 ~ 50° C
- Storage Temperature -20 ~ 80° C

1 Software

2 IPCC

3 TPC

4 FPM

5 ATM & AWS

6 DA&C

7 cPCI

8 ADAM-3000

9 Motion Control

10 ICOM

11 Industrial Networking

12 UNO

13 ADAM-4000

14 ADAM-5000

15 ADAM-6000

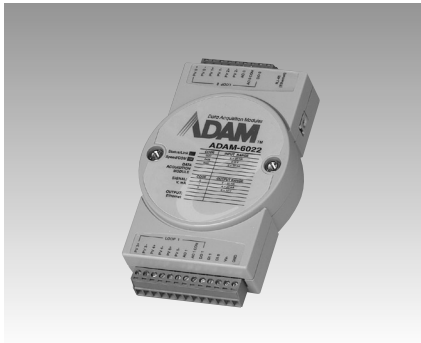
16 ADAM-8000

17 BAS

ADAM-6022 ADAM-6000

Ethernet-based Dual-loop PID Controller

Series Dimensions



ADAM-6022

CE FCC

Specifications

General

- **Dimensions (W x H x D)** 70 x 112 x 25 mm
- **Loop Number** 2 (3 AI, 1 AO, 1 DI, 1 DO for each control loop)
- **Power Consumption** 4 W (typical)
- **LAN** 10/100Base-T

Analog Input

- **Accuracy** $\pm 0.1\%$ or better
- **Bandwidth** 13.1 Hz @ 50 Hz
15.72 Hz @ 60 Hz
- **Channels** 6 differential
- **CMR @ 50/60 Hz** 92 dB min.
- **Resolution** 16 bits
- **Input Impedance** 20 M Ω
- **Input Range** 0 ~ 10 V_{DC}; 0 ~ 20 mA,
4 ~ 20 mA
- **Isolation Voltage** 2,000 V_{DC}
- **Sampling Rate** 10 samples/sec.
- **Span Drift** ± 25 ppm/ $^{\circ}$ C
- **Zero Drift** ± 6 μ V/ $^{\circ}$ C

Analog Output

- **Accuracy** 0.05% of FSR
- **Channels** 2
- **Drift** ± 50 ppm/ $^{\circ}$ C
- **Drive Voltage** 15 V_{DC} (current output)
- **Isolation Voltage** 2,000 V_{DC}
- **Output Range** 0 ~ 10 V_{DC}; 4 ~ 20 mA,
0 ~ 20 mA
- **Resolution** 12 bits

Digital Inputs

- **Channels** 2
- **Dry Contact:** Logic level 0: close to GND
logic level 1: open
- **Wet Contact:** Logic level 0: +3Vmax
Logic level 1: 10~30 V_{DC}

Digital Outputs

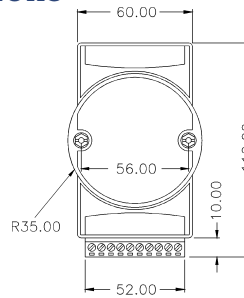
- **Channels** 2
- **Open Collector to 30 V**
100 mA max. load

Environment

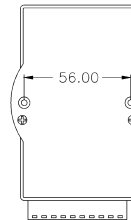
- **Humidity (Operating)** 20~95% RH, (non-cond)
- **Humidity (Storage)** 0~95% RH, (non-cond.)
- **Operating Temperature** -10~50 $^{\circ}$ C
- **Storage Temperature** -20~80 $^{\circ}$ C

Dimensions

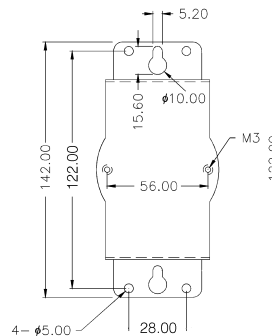
Unit: mm



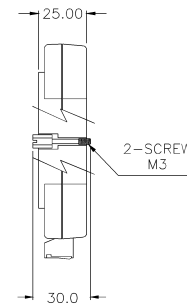
FRONT VIEW



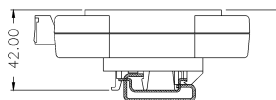
REAR VIEW



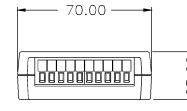
PANEL MOUNTING BRACKET



SIDE VIEW



DIN - RAIL MOUNTING ADAPTER



TOP VIEW

Ordering Information

- **ADAM-6022** Dual-loop PID Controller

Software Ordering Information

- **PCLS-OPC/MTP** Modbus/TCP OPC Server
- **AStudio-WNT/DEV** Astudio-WNI/PRO Web-enabled HMI/SCADA Software