

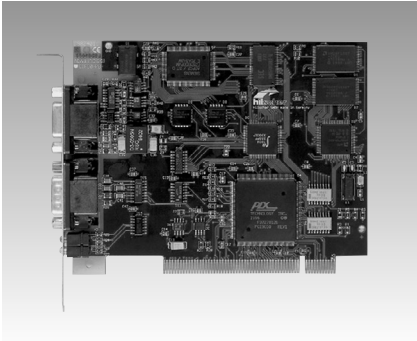
AD-CIF50-PB AD-CIF104-PB AD-CIF104-DPS AD-CIF104P-PB

PROFIBUS™ DP/FMS Master PCI Communication Card

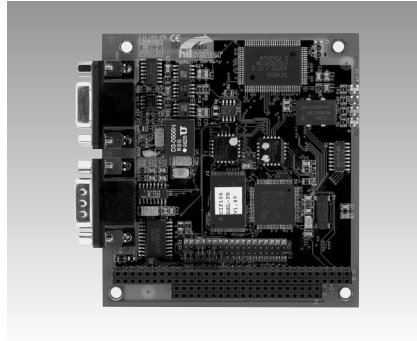
PROFIBUS™ DP/FMS Master PC/104 Module

PROFIBUS™ DP Slave PC/104 Module

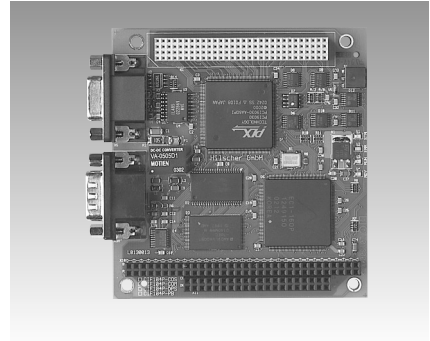
PROFIBUS™ DP/FMS Master PC/104-plus Module



AD-CIF50-PB



AD-CIF104-PB, AD-CIF104-DPS



AD-CIF104P-PB



Specifications

Bus Interface

- Interface PCI
- Dual-port Memory 8 KB
- Interrupt 3-7, 9-12, 14, 15 via Plug & Play

PROFIBUS Interface

- Interface EN 50170
- Transmission Rate 9.6 kBaud to 12 MBaud
- Connector ASPC2
- Interface RS485, optically isolated
- Connector DSub-female connector 9-pin

Diagnostic Interface

- Interface RS232C, non-isolated
- Connector DSub-male connector 9-pin

General

- Display RDY, RUN, STA, ERR
- Operating Voltage 5 V ±5%/650 mA
- Operating Temperature 0 ~ 55° C (32 ~ 131° F)
- Dimensions (L x W x H) 134 x 107 x 20 mm (5.3" x 4.2" x 0.8")
- Weight 130 g
- Software C functions library: DRV-TKIT
COM interface: DRV-COM
Device driver Windows: DRV-WIN
Device driver Linux: DRV-LNX
Documentation on CD: CD-SYS
Basic version System Configurator

Ordering Information

- AD-CIF50-PB Communication Interface PCI PROFIBUS-DP/FMS-Master Card

Specifications

- Card Format PC/104

Bus Interface

- Interface ISA
- Dual-port Memory 8 KB
- Interrupt 3-7, 9-12, 14, 15

PROFIBUS interface

- Interface EN 50170
- Transmission Rate 9.6 kBaud to 12 MBaud
- Controller ASPC2
- Interface RS485, optically isolated
- Connector DSub-female 9-pin

Diagnostic Interface

- Interface RS232C, non-isolated
- Connector DSub-male 9-pin

General

- Display RDY, RUN, STA, ERR
- Operating Voltage +5 V ±5%/650 mA
- Operating Temperature 0 ~ 55° C (32 ~ 131° F)
- Dimensions (L x W x H) 90 x 96 x 25 mm (3.5" x 3.7" x 1")
- Weight 120 g
- Software C functions library: DRV-TKIT
COM interface: DRV-COM
Device driver Windows: DRV-WIN
Device driver Linux: DRV-LNX
Documentation on CD: CD-SYS
Basic version System Configurator

Ordering Information

- AD-CIF104-PB PROFIBUS-DP/FMS-Master PC/104 Module with left DSub 9-pin connector
- AD-CIF104-DPS PROFIBUS-DP-Slave PC/104 Module with left DSub 9-pin connector

Specifications

- Card Format PC/104-Plus

Bus Interface

- Interface PCI
- Dual-port Memory 8 KB
- Interrupt Plug & Play

PROFIBUS interface

- Interface EN 50170
- Transmission Rate 9.6 kBaud to 12 MBaud
- Controller EC1
- Interface RS485, optically isolated
- Connector DSub-female 9-pin

Diagnostic Interface

- Interface RS232C, non-isolated
- Connector DSub-male 9-pin

General

- Display RDY, RUN, STA, ERR
- Operating Voltage +5 V ±5%/50 mA, +3.3 V ±5% < 400 mA
- Operating Temperature 0 ~ 55° C (32 ~ 131° F)
- Dimensions (L x W x H) 90 x 96 x 25 mm (3.5" x 3.7" x 1")
- Weight 120 g
- Software C functions library: DRV-TKIT
COM interface: DRV-COM
Device driver Windows: DRV-WIN
Device driver Linux: DRV-LNX
Documentation on CD: CD-SYS
Basic version System Configurator

Ordering Information

- AD-CIF104P-PB PROFIBUS-DP/FMS-Master PC/104-Plus Module with left DSub 9-pin connector

1
Software

2
IPPC

3
TPC

4
FPM

5
ATM & AWS

6
DA&C

7
cPCI

8
ADAM-3000

9
Motion Control

10
ICOM

11
eConnectivity

12
UNO

13
ADAM-4000

14
ADAM-5000

15
ADAM-6000

16
ADAM-8000

17
BAS