

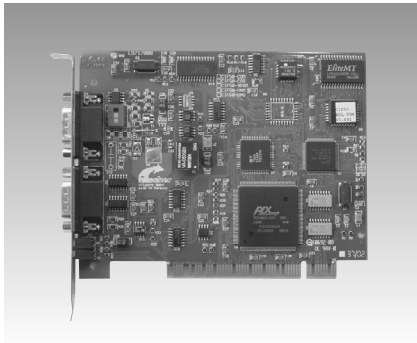
AD-CIF50-COM AD-CIF104-COM AD-CIF104-COS AD-CIF104P-COM

CANopen Master PCI Communication Card

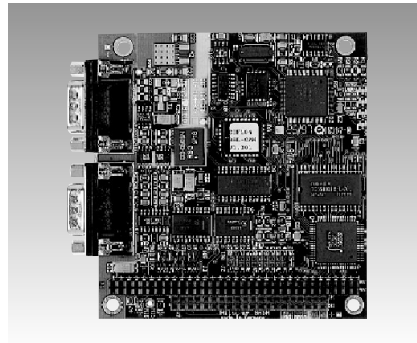
CANopen Master PC/104 Module

CANopen Slave PC/104 Module

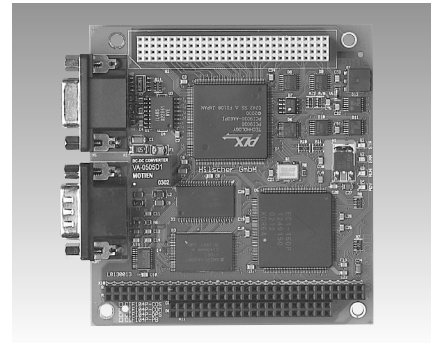
CANopen Master PC/104-plus Module



AD-CIF50-COM



AD-CIF104-COM, AD-CIF104-COS



AD-CIF104P-COM



Specifications

Bus Interface

- **Bus Interface** PCI
- **Dual-port Memory** 8 KB
- **Interrupt** 3-7,9-12,14,15 via Plug & Play

CANopen Interface

- **Interface** CiA DS-102
- **Transmission Rate** 10 kBaud to 1 MBaud
- **Controller** SJA 1000
- **Interface** ISO 11898, optically isolated
- **Connector** DSub-male connector 9-pin

Diagnostic Interface

- **Interface** RS-232C, non-isolated
- **Connector** DSub-male connector 9-pin

General

- **Display** RDY, RUN, STA, ERR
- **Operating Voltage** +5 V ±5%/500 mA, ±12 V ±5%/50 mA
- **Operating Temperature** 0 ~ 55° C (32 ~ 131° F)
- **Dimensions (L x W x H)** 134 x 107 x 20 mm (5.3" x 4.2" x 0.8")
- **Weight** 130 g
- **Software** C functions library: DRV-TKIT
COM interface: DRV-COM
Device driver Windows: DRV-WIN
Device driver Linux: DRV-LNX
Documentation on CD: CD-SYS
Basic version System Configurator

Ordering Information

- **AD-CIF50-COM** Communication Interface PCI CANopen-Master Card

Specifications

- **Card Format** PC/104

Bus Interface

- **Bus Interface** ISA
- **Dual-port memory** 8 KB
- **Interrupt** 3-7, 9-12, 14, 15

CANopen Interface

- **Interface** CiA DS - 102
- **Transmission Rate** 10 kBaud to 1 MBaud
- **Controller** SJA1000
- **Interface** ISO 11898, optically isolated
- **Connector** DSub-male 9-pin

Diagnostic Interface

- **Interface** RS-232C, non-isolated
- **Connector** DSub-male 9-pin

General

- **Display** RDY, RUN, STA, ERR
- **Operating Voltage** +5 V ±5%/500 mA
- **Operating Temperature** 0 ~ 55° C (32 ~ 131° F)
- **Dimensions (L x W x H)** 90 x 96 x 25 mm (3.5" x 3.7" x 1")
- **Weight** 120 g
- **Software** C functions library: DRV-TKIT
COM interface: DRV-COM
Device driver Windows: DRV-WIN
Device driver Linux: DRV-LNX
Documentation on CD: CD-SYS
Basic version System Configurator

Ordering Information

- **AD-CIF104-COM** CANopen-Master PC/104 Module with left DSub 9-pin connector
- **AD-CIF104-COS** CANopen-Slave PC/104 Module with left DSub 9-pin connector

Specifications

- **Card Format** PC/104-Plus

Bus Interface

- **Bus Interface** PCI
- **Dual-port memory** 8 KB
- **Interrupt** Plug & Play

CANopen Interface

- **Interface** CiA DS - 102
- **Transmission Rate** 10 kBaud to 1 MBaud
- **Controller** EC1
- **Interface** ISO 11898, optically isolated
- **Connector** DSub-male 9-pin

Diagnostic Interface

- **Interface** RS-232C, non-isolated
- **Connector** DSub-male 9-pin

General

- **Display** RDY, RUN, STA, ERR
- **Operating Voltage** +5 V ±5%/500 mA, 3.3 V ±5% < 400 mA
- **Operating Temperature** 0 ~ 55° C (32 ~ 131° F)
- **Dimensions (L x W x H)** 90 x 96 x 25 mm (3.5" x 3.7" x 1")
- **Weight** 120 g
- **Software** C functions library: DRV-TKIT
COM interface: DRV-COM
Device driver Windows: DRV-WIN
Device driver Linux: DRV-LNX
Documentation on CD: CD-SYS
Basic version System Configurator

Ordering Information

- **AD-CIF104P-COM** CANopen-Master PC/104-Plus Module with left DSub 9-pin connector

1

Software

2

IPPC

3

TPC

4

FPM

5

ATM & AWS

6

DA&C

7

cPCI

8

ADAM-3000

9

Motion Control

10

ICOM

11

eConnectivity

12

UNO

13

ADAM-4000

14

ADAM-5000

15

ADAM-6000

16

ADAM-8000

17

BAS